

Modern architecture

Unique technology

Individual options

**Create an unforgettable
experience.**



SHOWPALAST MÜNCHEN

UNIQUE TECHNOLOGY



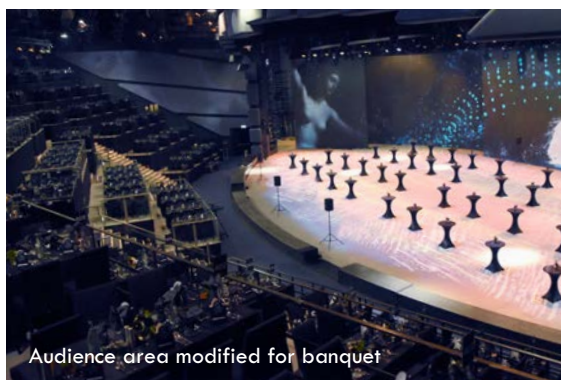
Exterior view: SHOWPALAST MÜNCHEN



Foyer with multi-colored lights



Possible stage construction



Audience area modified for banquet

SHOWPALAST MÜNCHEN seats audiences of up to 1.700, with a stage over 1.200 square metres and Europe's largest LED wall at almost 600 square metres. Exclusive hire of additional spaces in our meeting area is also available.

SHOWPALAST MÜNCHEN technical equipment:

- 1.700-seater audience with 20 rows
- Height of over 17 metres
- Sophisticated layout with steeply arranged audience rows creating unique proximity to the stage
- Entire theatre space suitable for panorama-style use
- 900 square metres of events space
- 594 square metre (66 × 9 metres) LED wall, four-part concave
- 29 video projectors (floor and front projectors)
- Two rail-bound airframes (for vertical and horizontal travel)
- One 3D airframe extending into the audience

Our foyer boasts over 80 LED strips with 12.500 LEDs spanning 1,2 kilometres in length that can be used to put on your own colour show – a visual highlight on arrival.

Your event options include:

- Vehicle presentations • Employee events • Kick-off
- Product presentations • Meetings • Dinner and show

MEET IN STYLE

DUE FOR COMPLETION
IN AUTUMN 2019



Exterior view: Restaurant
and conference rooms

Our meeting area includes the following spaces:

- Two conference rooms, each holding approx. 100 people
- A roof terrace for approx. 150 people
- A restaurant seating approx. 350 people
- A beer garden for approx. 400 people

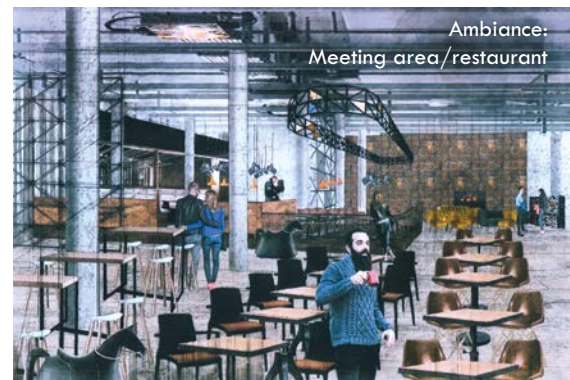
Modern meeting rooms with a stunning view of CAVALLUNA PARK

Meeting suggestion:

Meet and stroll in an inspiring park

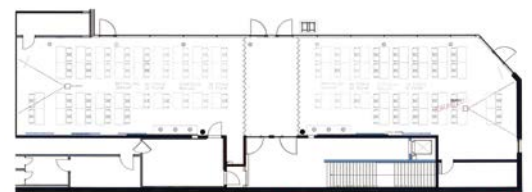
Outdoor areas for team-building activities
across the entire site

Meet with and without horses – both available



Ambiance:
Meeting area/restaurant

Floor plan: Meeting area
with seminar-style seating



SHOWPALAST MÜNCHEN also offers excellent transport links and benefits from existing infrastructure thanks to its proximity to the Allianz Arena. Fröttmaning U-Bahn station is just 100 metres away and there are 274 parking spaces on-site.



Ambiance:
Meeting area/restaurant

SPECIAL EXTRA



Interior view: „Pferde-Kino“



Exterior view: „Pferde-Kino“



Interior view: „Kleine Scheune“



Interior view: „Kinder-Universität“

The numerous themed sections in CAVALLUNA PARK offer lots of different events options. Whether it's a conference in the „Pferde-Kino“ or a sparkling wine reception in the „Kleine Scheune“ – in CAVALLUNA PARK, (almost) everything is possible.

- Exclusive use of individual sections or the entire park
- Various themed sections, such as the „Pferde-Kino“ for around 200 people

Extraordinary sections for meetings

Combination of company and family event possible

Exclusive opening times for your group only, also available outside standard opening times

Special food-truck event

We have a five-hectare space, multitalented artists, performers, riders, horses and donkeys – let's work together to put on a creative show in this space and give your event an individual touch.

Event sales contact:
Tel.: +49 (0)89 121 402 522
E-Mail: event@apassionata.com